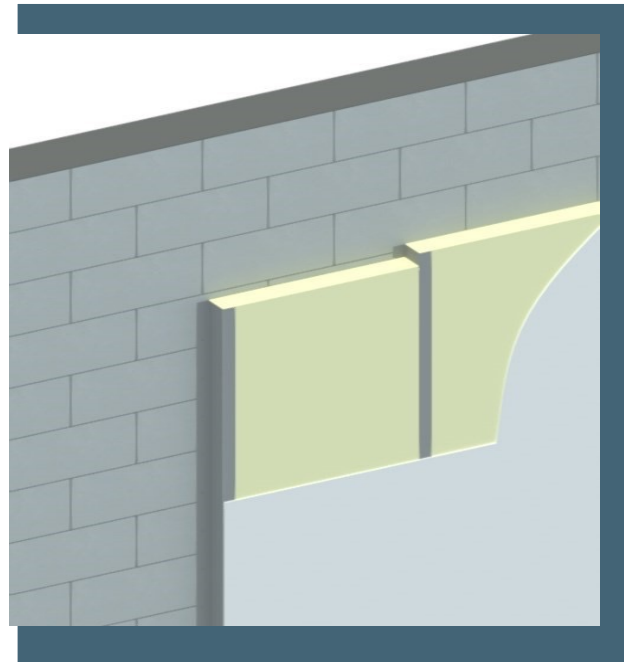
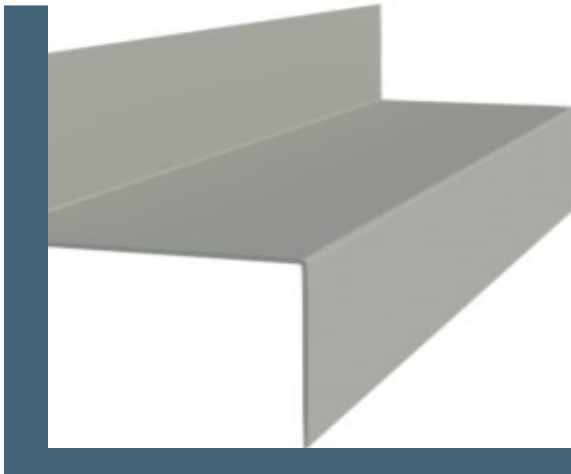


## Z Bar



Z Bar is used to furr out interior masonry or poured concrete wall substrates and to support rigid polystyrene, mineral, or fiberglass batt insulation while providing a uniform plane for gypsum panel attachment. Z Bar must be installed vertically with the flange against the substrate. The type of fastener and spacing will vary based on application. Gypsum wallboard may be installed parallel or perpendicular to the Z Bar. Metal lath should be installed perpendicular to the Z Bar. Z Bar flanges are typically 1 to 1.5", and the sections are available in various depths to accommodate insulation thickness. Product is available in 10' standard length.

**Material:** Manufactured in accordance with CAN/CSA S-136-16 (North American specification for the design of cold-formed steel structural members), ASTM A653/A653M (Standard for steel sheet, zinc-coated (galvanized) or zinc-iron alloy-coated by the hot-dip process), ASTM C645 (Standard specification for non-structural steel framing members).