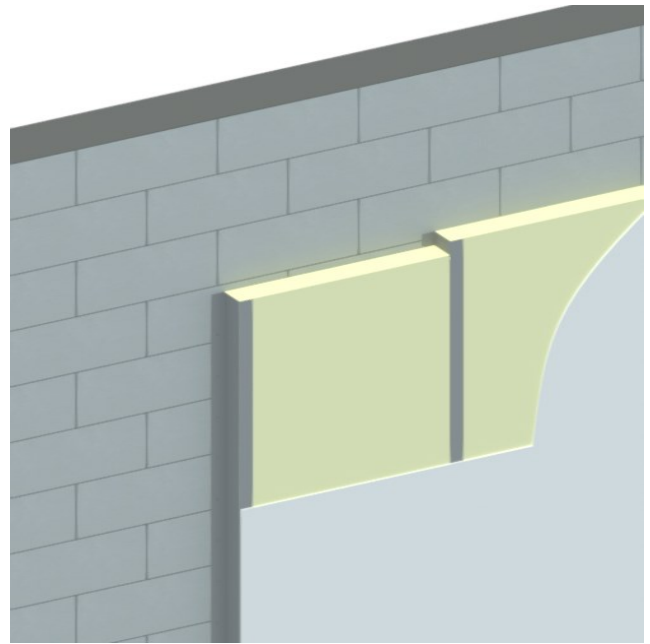
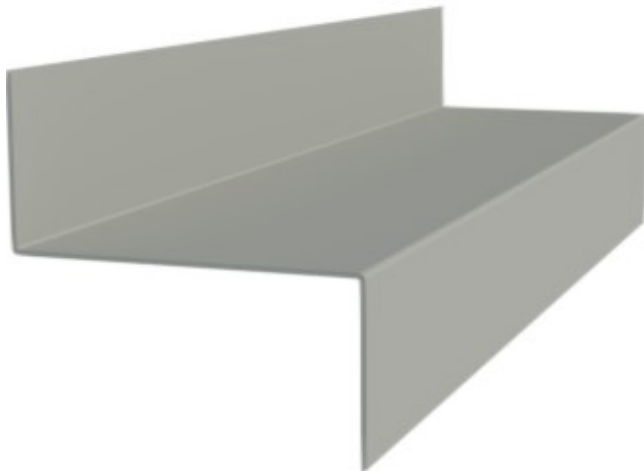


DCM METAL CORP

Z BAR

D A T A S H E E T



Z Bar is used to furr out interior masonry or poured concrete wall substrates and to support rigid polystyrene, mineral, or fiberglass batt insulation while providing a uniform plane for gypsum panel attachment.



Z Bar must be installed vertically with the flange against the substrate. The type of fastener and spacing will vary based on application. Gypsum wall-board may be installed parallel or perpendicular to the Z Bar. Metal lath should be installed perpendicular to the Z Bar.

Z Bar flanges are typically 1 to 1.5", and the sections are available in various depths to accommodate insulation thickness. Product is available in 10' standard length.

Manufactured in accordance with CAN/CSA S-136-16 (North American specification for the design of cold-formed steel structural members), ASTM A653/A653M (Standard for steel sheet, zinc-coated (galvanized) or zinc-iron alloy-coated by the hot-dip process), ASTM C645 (Standard specification for non-structural steel framing members).

DCM METAL CORP

396 Attwell Drive
Toronto, Ontario
M9W 5C3

Phone: 416-742-7642
Fax: 416-742-9438
www.dcm-metal.com